

COMPONENTS FOR MAINTENANCE

LPA | CF | SL







COMPONENTS FOR MAINTENANCE

LPA

STATION	5
VEHICLE	15
LINE	19
GARAGING SYSTEM	24
MAINTENANCE IN THE STATION	26
MAINTENANCE VEHICLE	27
ACCESSORIES	28

CF4 / CF2

STATION	30
VEHICLE	32
LINE	32
ACCESSORIES	37

SL

STATION	39
GRIP	40
LINE	41
ACCESSORIES	42

COMPONENTS FOR MAINTENANCE LPA

STATION	5
VEHICLE	15
LINE	19
GARAGING SYSTEM	24
MAINTENANCE IN THE STATION	26
MAINTENANCE VEHICLE	27
ACCESSORIES	28



STATION

DEVICE FOR SLIPPING RESISTANCE TEST

MODEL
ID-Number: 41460024



STATION

CALIBRATION DEVICE FOR LOAD CELL - COUPLING RAIL

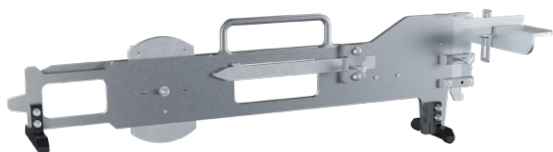
MODEL
ID-Number: 41463315



ASSEMBLY TOOLS FOR V-BELT PULLEY

MODEL

ID-Number: **41505714**



TEMPLATE FOR POSITIONING - ROPE DEFLECTION

MODEL

ID-Number: **50211947**



INTERMEDIATE FLANGE FOR CONVEYING TYRE

MODEL

ID-Number: **41016050**

STATION

**C HOOK SPANNER
FOR DEFLECTION
ROLLER BATTERY**

MODEL

ID-Number: **51221122**

STATION

**C HOOK SPANNER
FOR SAFETY BRAKE**

MODEL

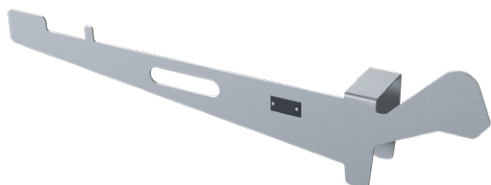
ID-Number: **51221123**

STATION

**TEMPLATE SHEAVE FOR
LINER / ROLLER LINER**

MODEL

ID-Number: **41510825**



TEMPLATE FOR CONDUCTOR RAIL

MODEL

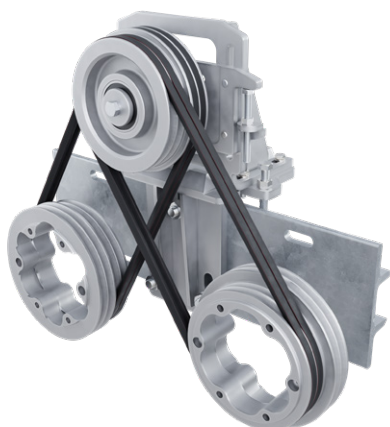
ID-Number: **41479816**



ROTATABLE HOISTING DEVICE 100 KG

MODEL

ID-Number: **41620896**

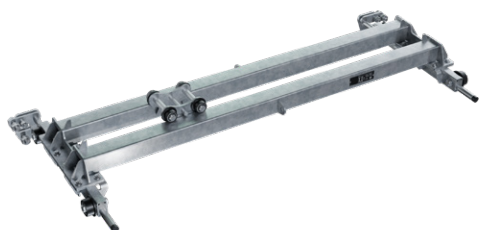


BELT TENSIONING DEVICE FOR TYRE CONVEYOR

MODEL

ID-Number: **41545498**

STATION



HOISTING DEVICE - STATION LPA / LPA-P

MODEL

ID-Number: **41532284**

STATION



CHAIN HOIST 2500 KG / 8M

MODEL

ID-Number: **20101043**

STATION



HOISTING DEVICE FOR DIRECT DRIVE

MODEL

ID-Number: **41532341**



TOOL BOX - STATION

MODEL

ID-Number: **41080402**



EXTENDIBLE LADDER

MODEL

ID-Number: **15100641**

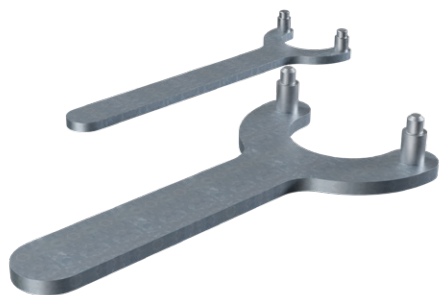


CALIBRE FOR COUPLING AREA

MODEL

ID-Number: **41522782**

STATION

**SPECIAL TOOL FOR
COUPLING STATION
PARKING**

MODEL

ID-Number: **50220260**

STATION

**SOCKET SPANNER LONG
SW46-3/4"**

MODEL

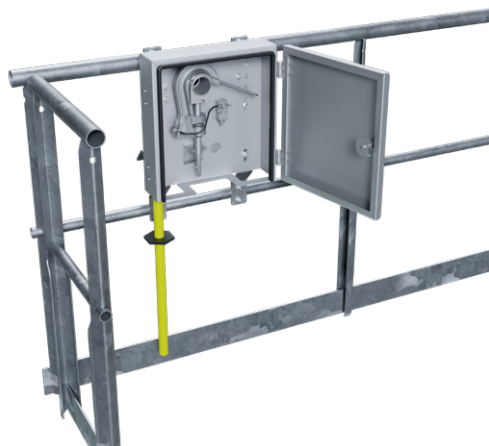
ID-Number: **20100401**

STATION

**LUBRICATING DEVICE
FOR GRIP**

MODEL

ID-Number: **41484937-01**ID-Number: **41484937-02**

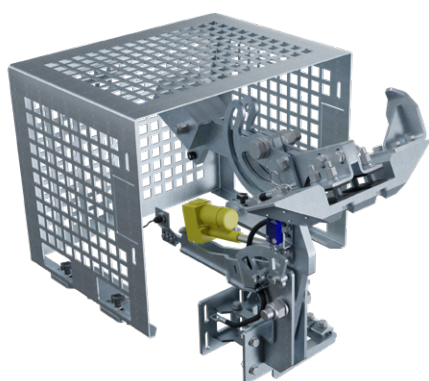


ROPE EARTHING HOOK

MODEL

ID-Number: **41445874-01**

ID-Number: **41445874-02**



ROPE EARTHING AUTOMATIC

MODEL

ID-Number: **41395774**

ID-Number: **41397225**

ID-Number: **41397438**



COMPRESSOR WITH SPIRAL TUBE AND AIR PISTOL WITH MANOMETER

MODEL

ID-Number: **20100746**



STATION

COMPRESSED AIR INSTALLATION - STATION

MODEL

ID-Number: **41530678**

STATION

COMPRESSED AIR INSTALLATION WITH EXTERNAL HOSE REEL - STATION

MODEL

ID-Number: **41512235**

STATION

MIRROR FOR ROPE INSPECTION

MODEL

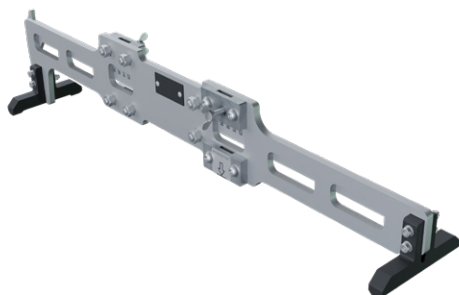
ID-Number: **41422962**ID-Number: **41411620**



GRIP BRUSH - STATION ENTRANCE

MODEL

ID-Number: **41527048**



TEMPLATE FOR CONTROL RAIL

MODEL

ID-Number: **50106938**



OIL PUMP FOR SHEAVE BEARING

MODEL

ID-Number: **50220265**



VEHICLE

TOOL FOR GRIP

MODELID-Number: **50220301**ID-Number: **50220395**

VEHICLE

GRIP OPENING DEVICE LPA

MODELID-Number: **50100431**

VEHICLE

TEMPLATE FOR CONTROL LEVER OUTSIDE

MODELID-Number: **50000735**



TEMPLATE FOR CONTROL LEVER INSIDE

MODEL

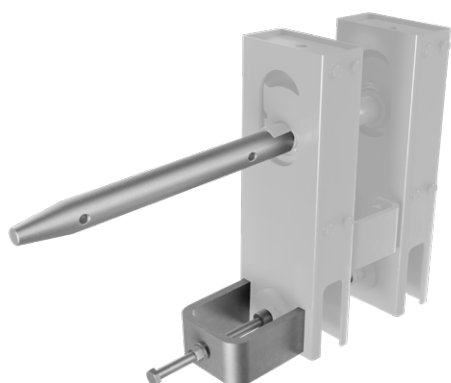
ID-Number: **50104939**



SWITCH ROD FOR OPERATING ELEMENT

MODEL

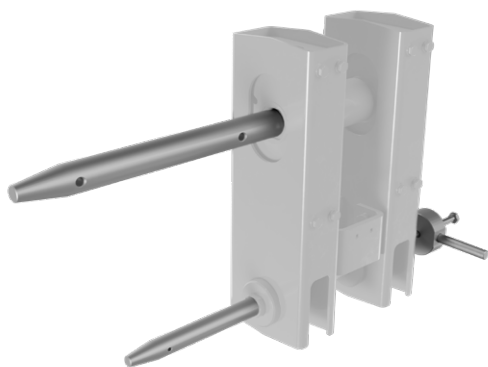
ID-Number: **41091887**



MAINTENANCE KIT FOR INTERMEDIATE LINK "DIAMOND"

MODEL

ID-Number: **41470365**



VEHICLE

MAINTENANCE KIT FOR INTERMEDIATE LINK “SYMPHONY-DIAMOND EVO”

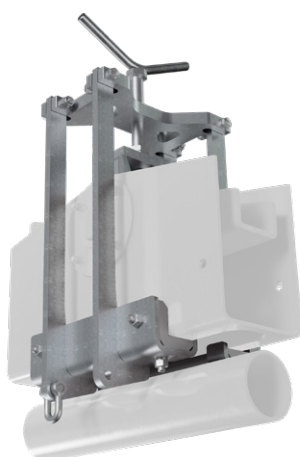
MODEL

ID-Number: **41470300**

VEHICLE

LOAD CONTROL DEVICE FOR GONDOLA DOOR

MODEL

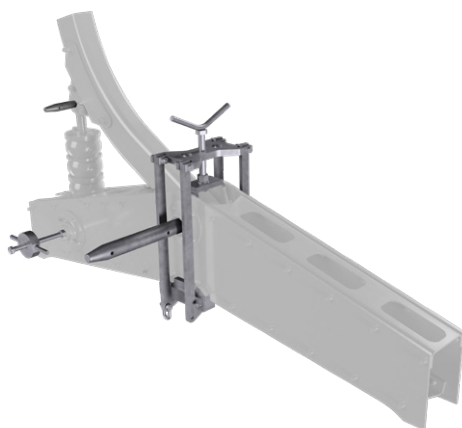
ID-Number: **41044201**

VEHICLE

MAINTENANCE KIT INTERMEDIATE FRAME LPE-6

MODEL

ID-Number: **41476011**



MAINTENANCE KIT INTERMEDIATE FRAME LPE-8

MODEL

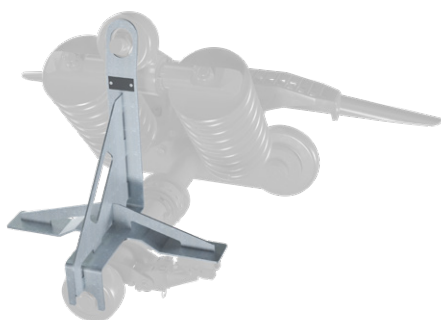
ID-Number: **41475815**



ADJUSTMENT WEIGHT FOR HOOD/SAFETY BAR

MODEL

ID-Number: **41095578**



TEMPLATE FOR CURRENT COLLECTOR LPA-N/M/L/XL

MODEL

ID-Number: **41467027**

VEHICLE

**LOAD CONTROL DEVICE
FOR SAFETY BAR**

MODEL

ID-Number: **50105105**

LINE

**LOWERING DEVICE -
VEHICLE LINE**

MODEL

ID-Number: **41538813**

LINE

**ROPE LIFTING DEVICE
FOR SUPPORT ROLLER
BATTERY**

MODEL

ID-Number: **41039302**



HYDRAULIC ROPE LIFTING DEVICE

MODEL

ID-Number: **41424300**

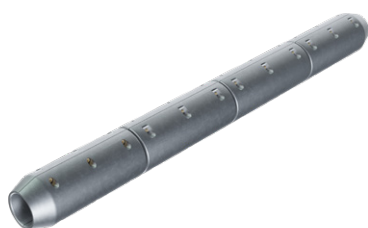


MOUNTING CONE FOR ROLLER AXLE D550

MODEL

ID-Number: **41199819**

ID-Number: **41199801**



CHECKING TOOL FOR CPS SENSOR

MODEL

ID-Number: **41530255**



LINE

ADJUSTING TOOL CPS SENSOR

MODEL

ID-Number: **41641466**

LINE

PNEUMATIC PUMP FOR GREASE

MODEL

ID-Number: **28058186**

LINE

SET - CARTRIDGES WITH ADAPTOR

MODEL

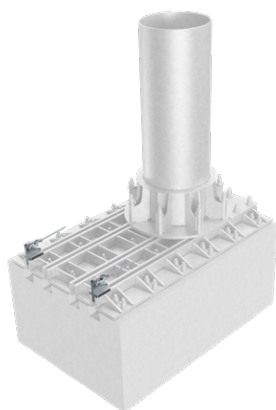
ID-Number: **28058712**



BATTERY GREASE GUN

MODEL

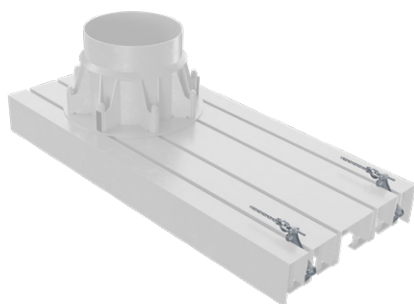
ID-Number: **28025543**



ADJUSTING DEVICE OUTSIDE - LINE TOWER

MODEL

ID-Number: **50104850**



ADJUSTING DEVICE INSIDE - LINE TOWER

MODEL

ID-Number: **50105677**

LINE



ROLLER LINER MOUNTING DEVICE T-0695-B

MODEL

ID-Number: **20100126**

LINE



TOOLS RUBBER LINER/ ROLLER BEARING 190D

MODEL

ID-Number: **28023236**

LINE



ROPE LIFTING DEVICE FOR ROLLER BATTERY

MODEL

ID-Number: **41528050**

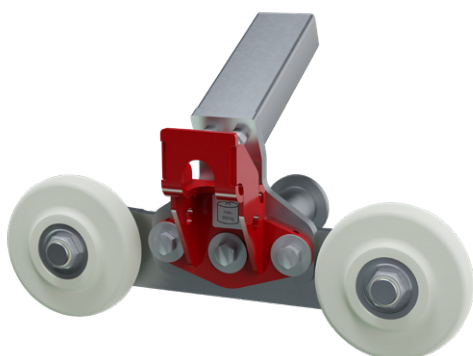


ROPE LIFTING DEVICE FOR COMPRESSION ROLLER BATTERY

MODEL

ID-Number: **15102725**

GARAGING SYSTEM



TRANSPORT DEVICE FOR CARRIER LPA N/M

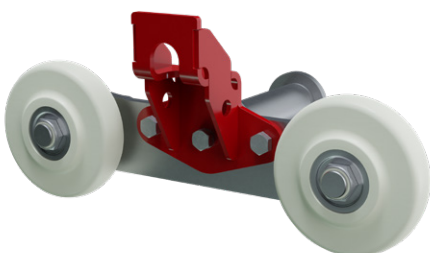
MODEL

ID-Number: **50102567**

ID-Number: **50102570**

ID-Number: **41167049**

GARAGING SYSTEM



TRANSPORT DEVICE FOR CARRIER LPAN/M

MODEL

ID-Number: **50102561**

ID-Number: **50102562**

ID-Number: **41208453**



GARAGING SYSTEM

FORCE MEASURING PIN FOR GRIPPING FORCE CONTROL 0-60KN

MODEL

ID-Number: **41519486**ID-Number: **41512267**

GARAGING SYSTEM

LIFTING DEVICE FOR VEHICLE

MODEL

ID-Number: **41443762**

GARAGING SYSTEM

HOISTING DEVICE - MAINTENANCE STAND

MODEL

ID-Number: **41532170**



TEST BENCH FOR GRIP

MODEL

ID-Number: **41530561**



HAND PUMP TZ-2730 TECPAM25/5-PMAXAB

MODEL

ID-Number: **41529053**



ELECTRICAL CHAIN HOIST 1000 KG/6M

MODEL

ID-Number: **20101781**



MAINTENANCE IN THE STATION

**MANUAL CHAIN HOIST
KITO KM15S1/1G**

MODEL

ID-Number: **15102686**

MAINTENANCE IN THE STATION

TOOL BOX

MODEL

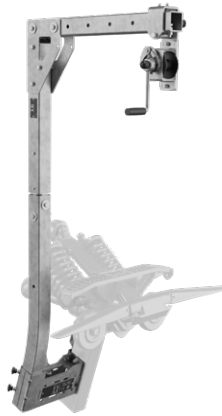
ID-Number: **41528303**

MAINTENANCE IN THE STATION

**TESTING DEVICE -
MANOMETER AND
ACCESSORIES**

MODEL

ID-Number: **41528450**



HOISTING DEVICE FOR MAINTENANCE CARRIER

MODEL

ID-Number: **41422552**



HYDRAULIC UNIT FOR MAINTENANCE DEVICE

MODEL

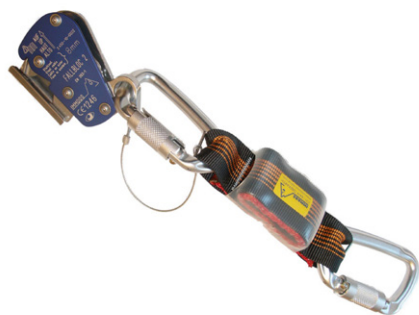
ID-Number: **41538920**



SUPPORT FOR HYDRAULIC UNIT - MAINTENANCE CARRIER

MODEL

ID-Number: **41523917**



ACCESSORIES

FALL PROTECTION DEVICE FALLBLOC 2 IMMOOS 8D

MODEL

ID-Number: **20100923**

ACCESSORIES

POWER SUPPLY WITH PLUG

MODEL

ID-Number: **05301476**

ACCESSORIES

SET - GREASE LUBRICATION

MODEL

ID-Number: **20102159**



HYDRAULIC OIL ATF DEXRON III H - 5 KG

MODEL

ID-Number: **28011832**

COMPONENTS FOR MAINTENANCE CF4 / CF2

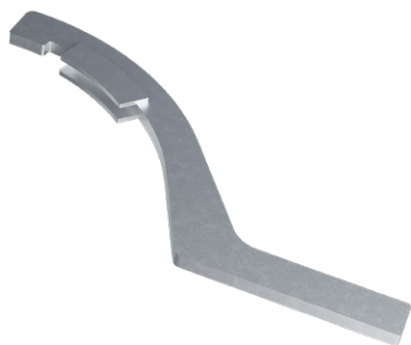
STATION	30
VEHICLE	32
LINE	32
ACCESSORIES	37



TESTING DEVICE - MANOMETER AND ACCESSORIES

MODEL

ID-Number: **41528450**



STATION

C HOOK SPANNER FOR SAFETY BRAKE

MODEL

ID-Number: **51221123**

STATION

DEVICE FOR SLIPPING RESISTANCE TEST CF2 / CF4

MODEL

ID-Number: **41599487**

STATION

LUBRICATING DEVICE FOR SHEAVE BEARING

MODEL

ID-Number: **50220265**



TURNING JIG FOR SHEAVE LINER

MODEL

ID-Number: **50107506**



SHIFTING DEVICE FOR FIXED GRIP

MODEL

ID-Number: **50111872**

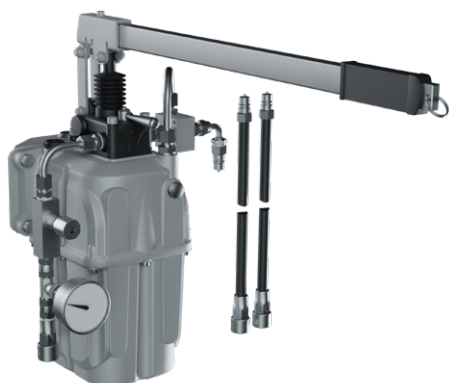
ID-Number: **2200055**



ASSEMBLY DEVICE FOR THERMAL SEAT COVER

MODEL

ID-Number: **51122197**



LINE

HAND PUMP TZ-2730 TECPAM25/5-PMAXAB

MODEL

ID-Number: **41529053**

LINE

ROPE LIFTING DEVICE - HYDRAULIC

MODEL

ID-Number: **41524797**

LINE

TEMPLATE FOR SHEAVE LINER / ROLLER LINER

MODEL

ID-Number: **41510825**



CHAIN HOIST 2500 KG / 8M

MODEL

ID-Number: **20101043**



PNEUMATIC PUMP FOR GREASE

MODEL

ID-Number: **28058186**



SET - CARTRIDGES WITH ADAPTOR

MODEL

ID-Number: **28058712**



BATTERY GREASE GUN

MODEL

ID-Number: **28025543**



MOUNTING DEVICE FOR ROLLER LINER T-0823

MODEL

ID-Number: **20100855**



HYDRAULIC ROPE LIFTING DEVICE FOR ROLLER BATTERY

MODEL

ID-Number: **41528050**



ROPE LIFTING DEVICE FOR COMPRESSION ROLLER BATTERY

MODEL

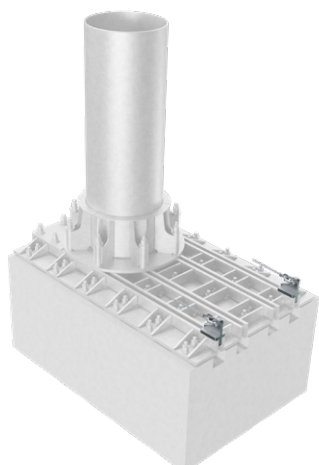
ID-Number: **15102725**



LOWERING DEVICE - VEHICLE LINE

MODEL

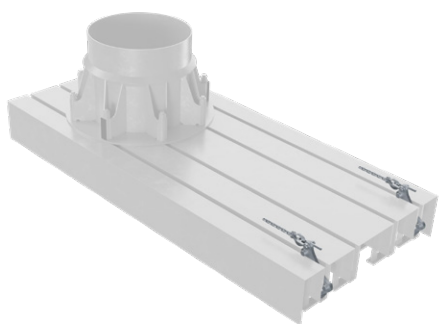
ID-Number: **41538813**



ADJUSTING DEVICE OUTSIDE - LINE TOWER

MODEL

ID-Number: **50104850**



LINE

ADJUSTING DEVICE INSIDE - LINE TOWER

MODEL

ID-Number: **50105677**

LINE

MOUNTING CONE FOR ROLLER AXLE D460-420

MODEL

ID-Number: **41199801**

ACCESSORIES

FALL PROTECTION DEVICE FALLBLOC 2 IMMOOS 8D

MODEL

ID-Number: **20100923**



TOOL BOX

MODEL

ID-Number: **50102168**



HYDRAULIC OIL ATF DEXRON III H

MODEL

ID-Number: **28011832**



SET - GREASE LUBRICATION

MODEL

ID-Number: **20102159**

COMPONENTS FOR MAINTENANCE SL

STATION	39
GRIP	40
LINE	41
ACCESSORIES	42



STATION

SPECIAL KEY FOR BRAKE

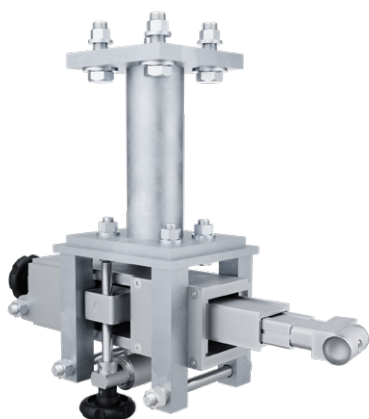
MODEL
ID-Number: **51117614**



STATION

TEMPLATE FOR ROLLER LINER 280D

MODEL
ID-Number: **41396952**



TURNING JIG FOR SHEAVE LINER

MODEL

ID-Number: **41138553**



CALIBRATION CYLINDER FOR GRIP

MODEL

ID-Number: **50100959**



ADJUSTING DEVICE FOR GRIP

MODEL

ID-Number: **50100079**



LINE

ROPE LIFTING DEVICE

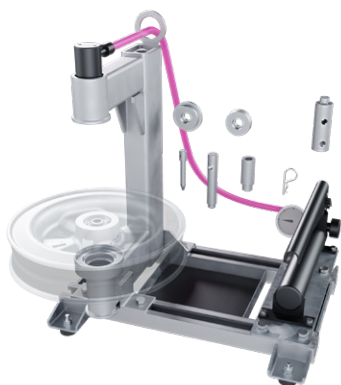
MODEL

ID-Number: **50104178**

LINE

DEVICE FOR ROLLER LINER

MODEL

ID-Number: **15101866**

LINE

ASSEMBLY DEVICE FOR ROLLER

MODEL

ID-Number: **50104145**



TOOL BOX

MODEL

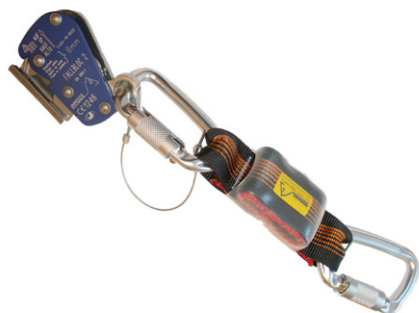
ID-Number: **50104177**



SET - GREASE LUBRICATION

MODEL

ID-Number: **20102159**



FALL PROTECTION DEVICE FALLBLOC 2 IMMOOS 8D

MODEL

ID-Number: **20100923**

LEITNER®

LEITNER AG

I-39049 Sterzing (BZ)

Tel. +39 0472 722 111

info@leitner.com

www.leitner.com